

WORLD DEMOLITION SUMMIT 2019

Rodd Palon

President, Two Rivers Demolition
Demolition with Façade Retention





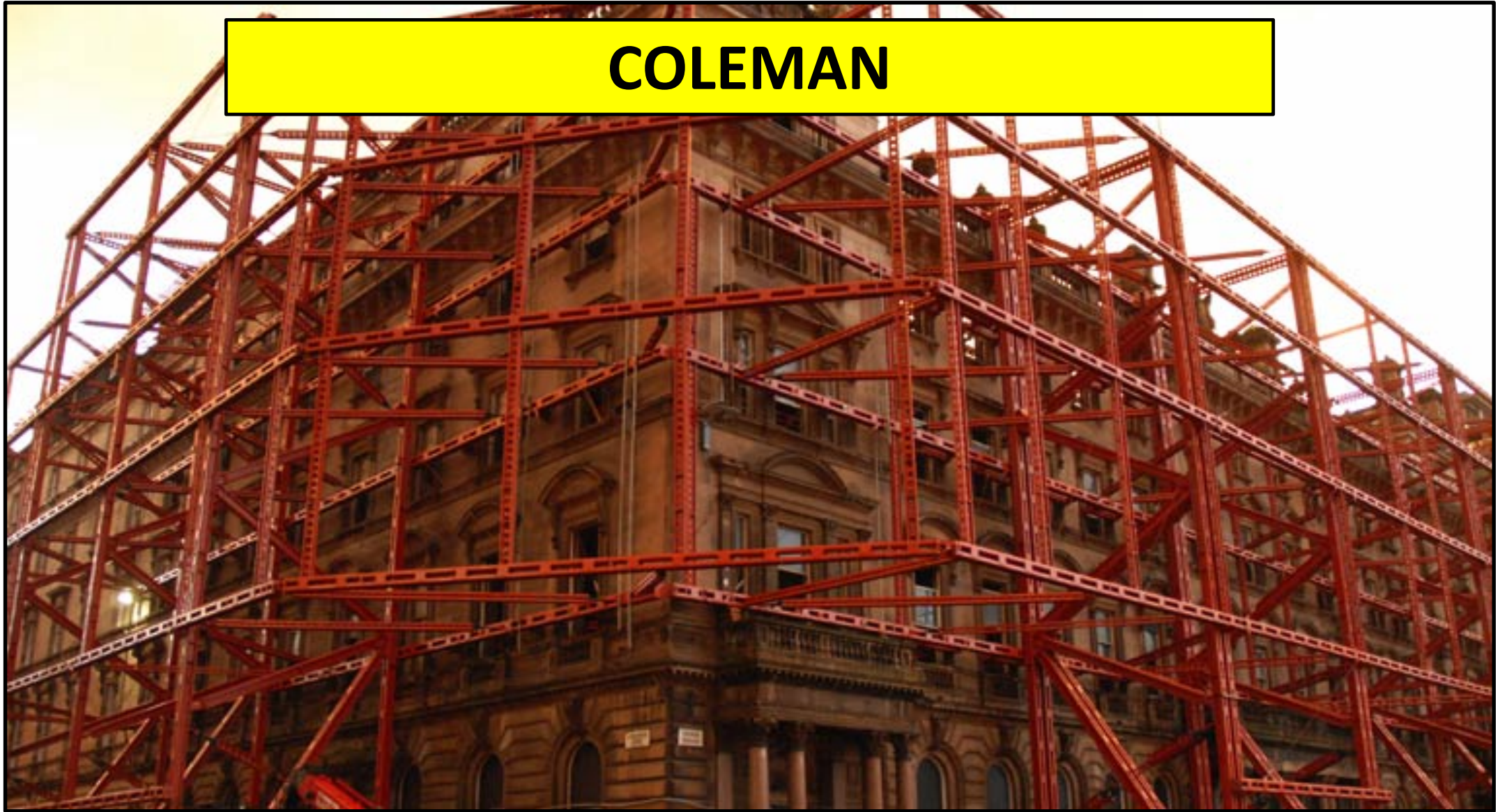


HOTEL CLAYTON, SACRAMENTO, CALIF.

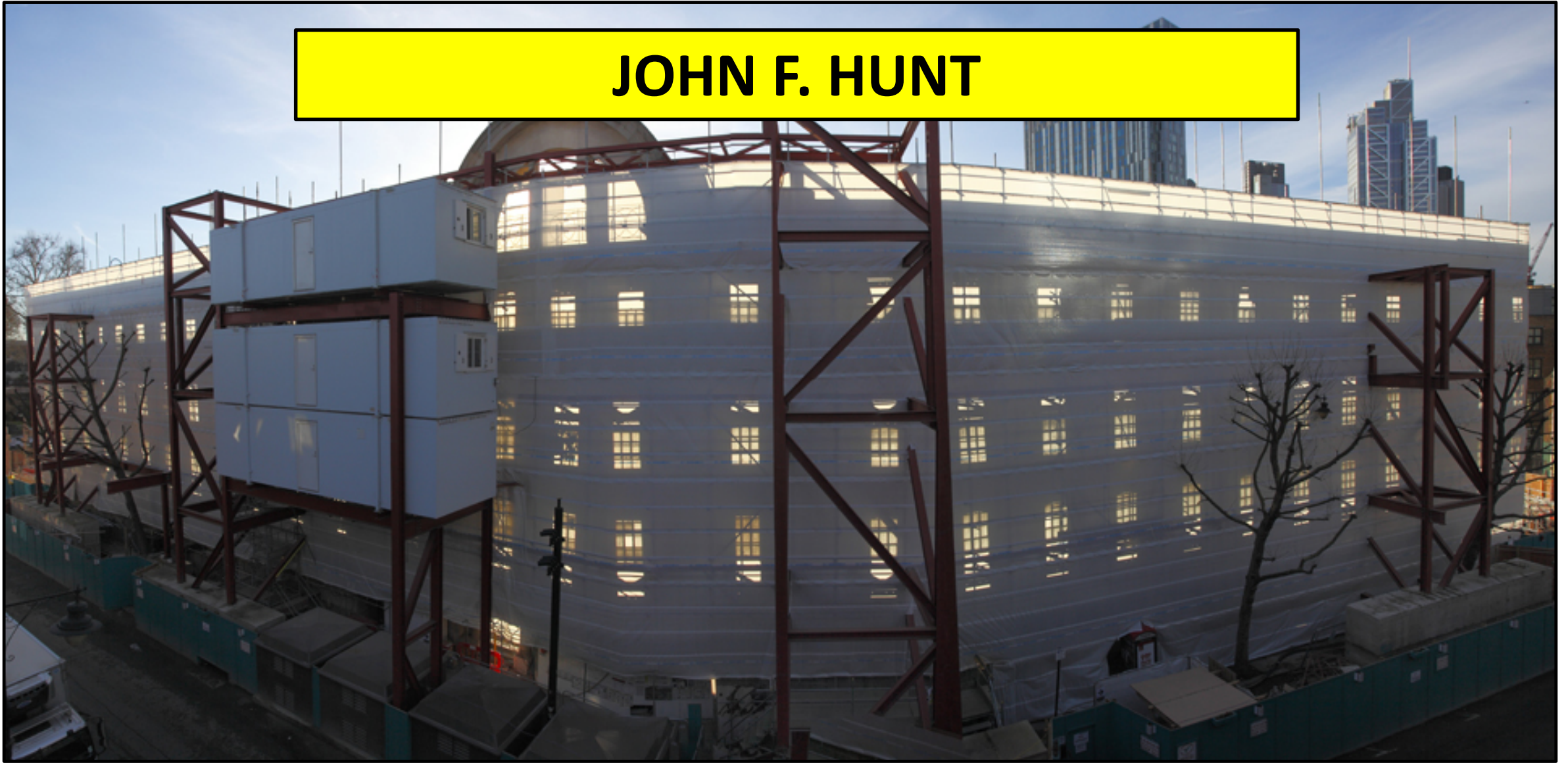
CANTILLON DEMOLITION & DECONSTRUCTION



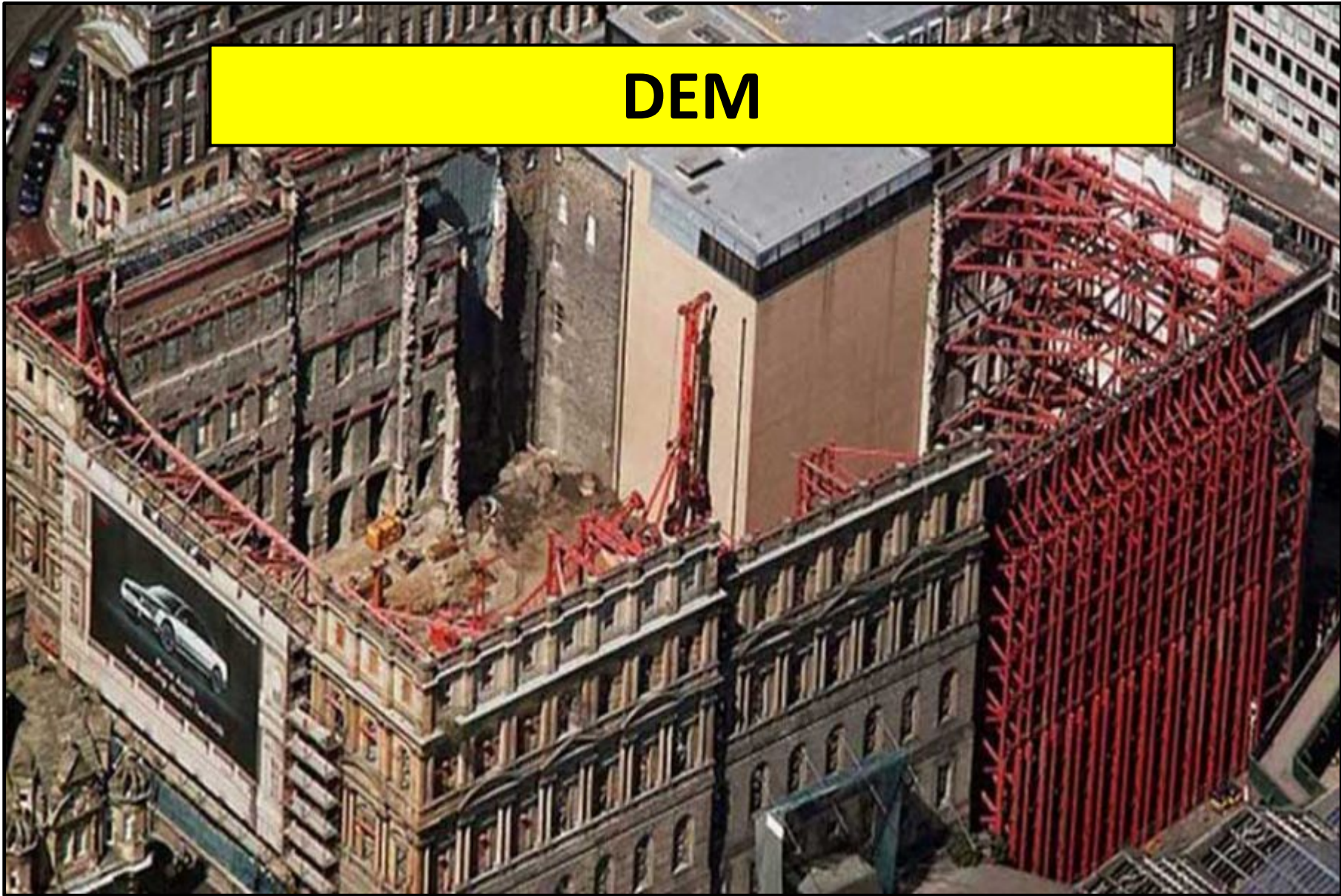
COLEMAN

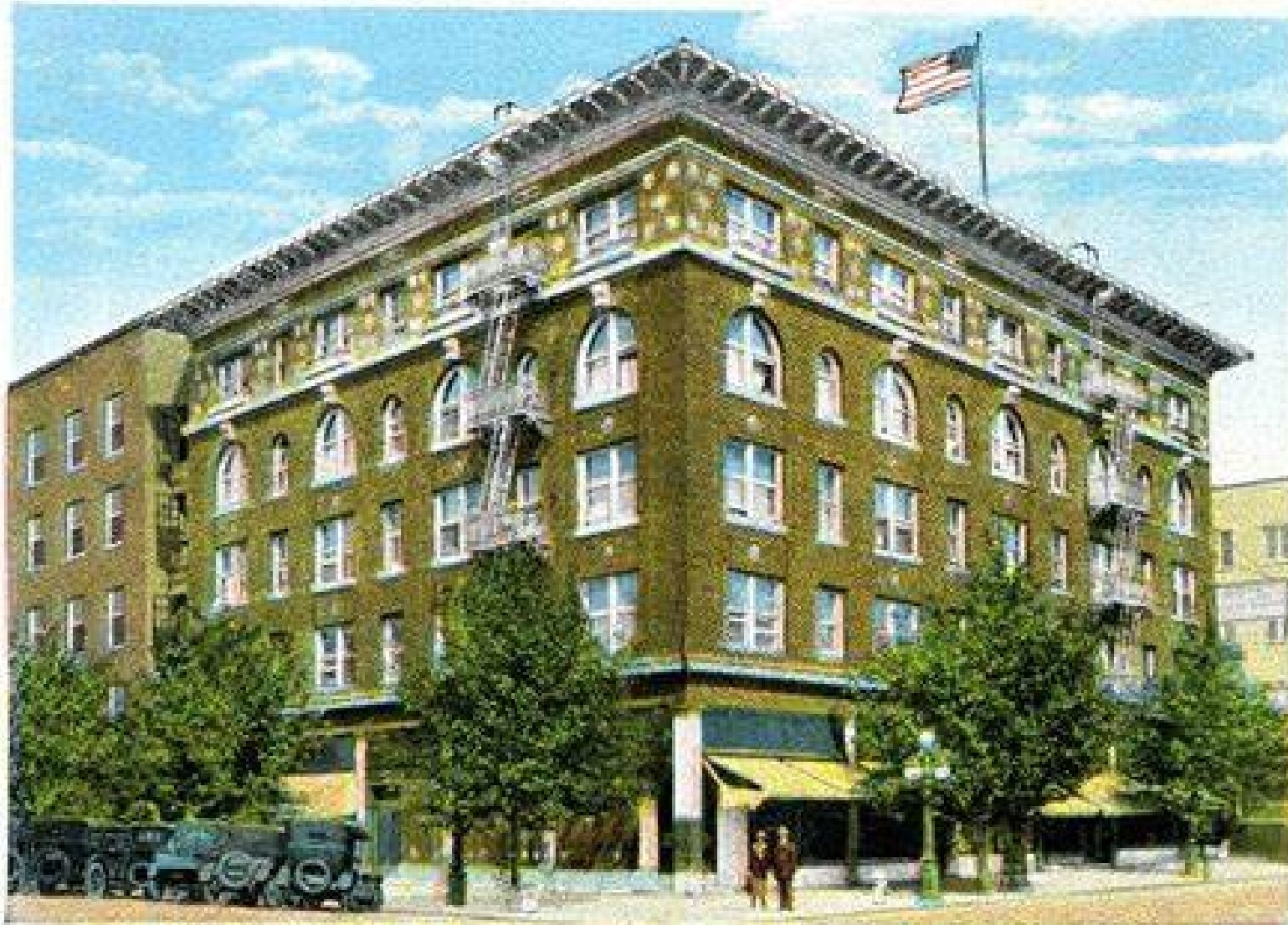


JOHN F. HUNT



DEM





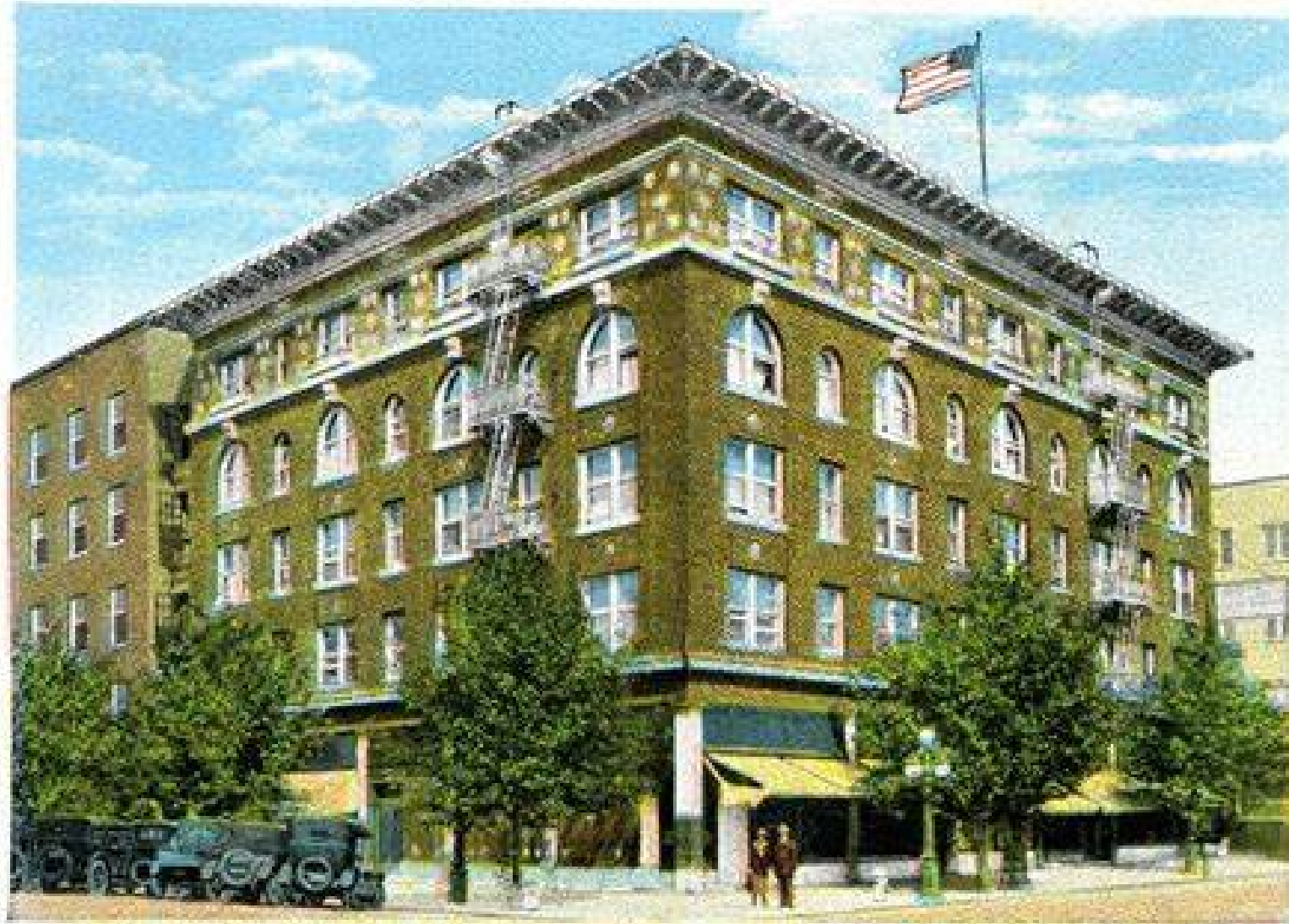
HOTEL CLAYTON, SACRAMENTO, CALIF.



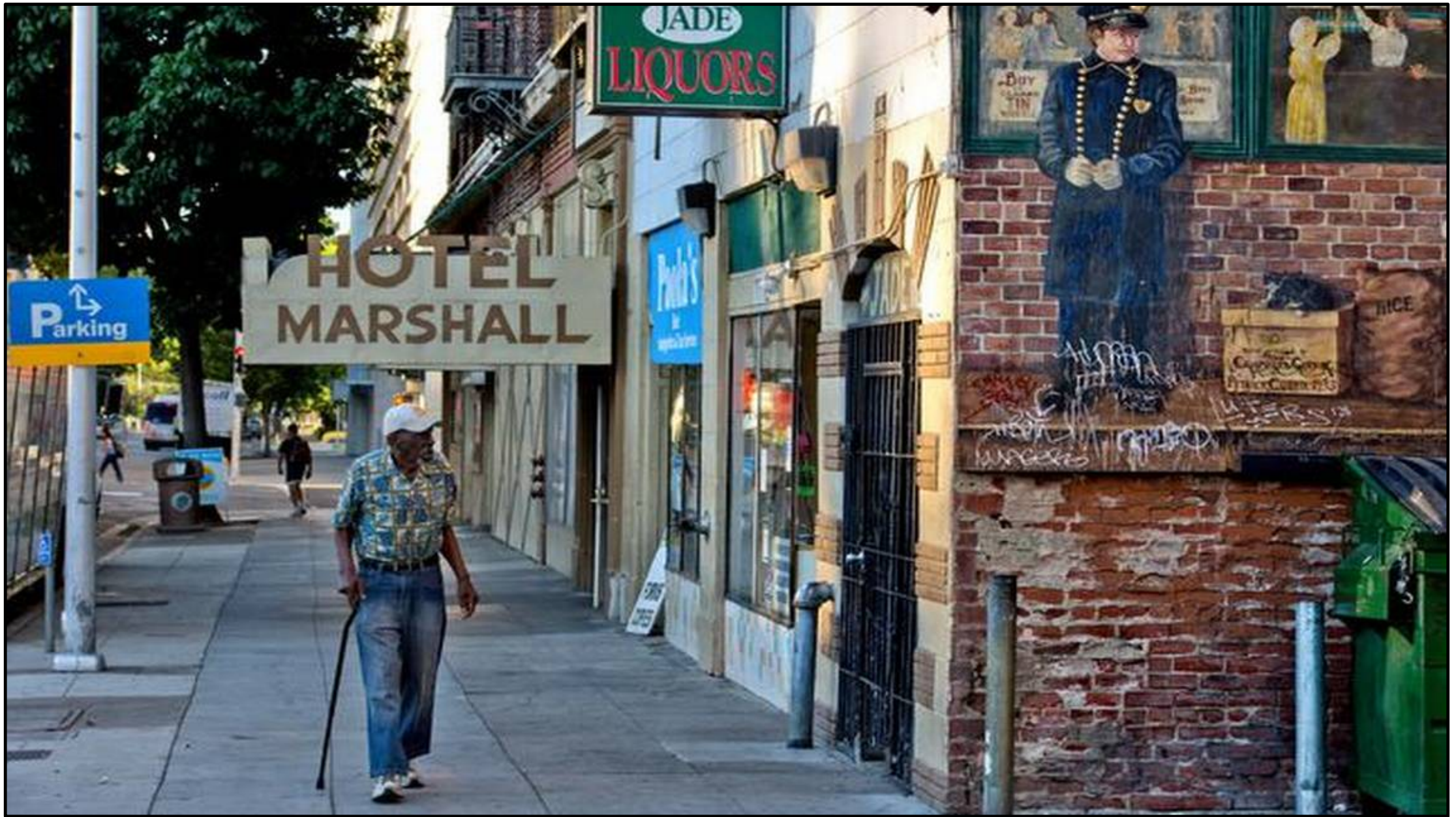








HOTEL CLAYTON, SACRAMENTO, CALIF.

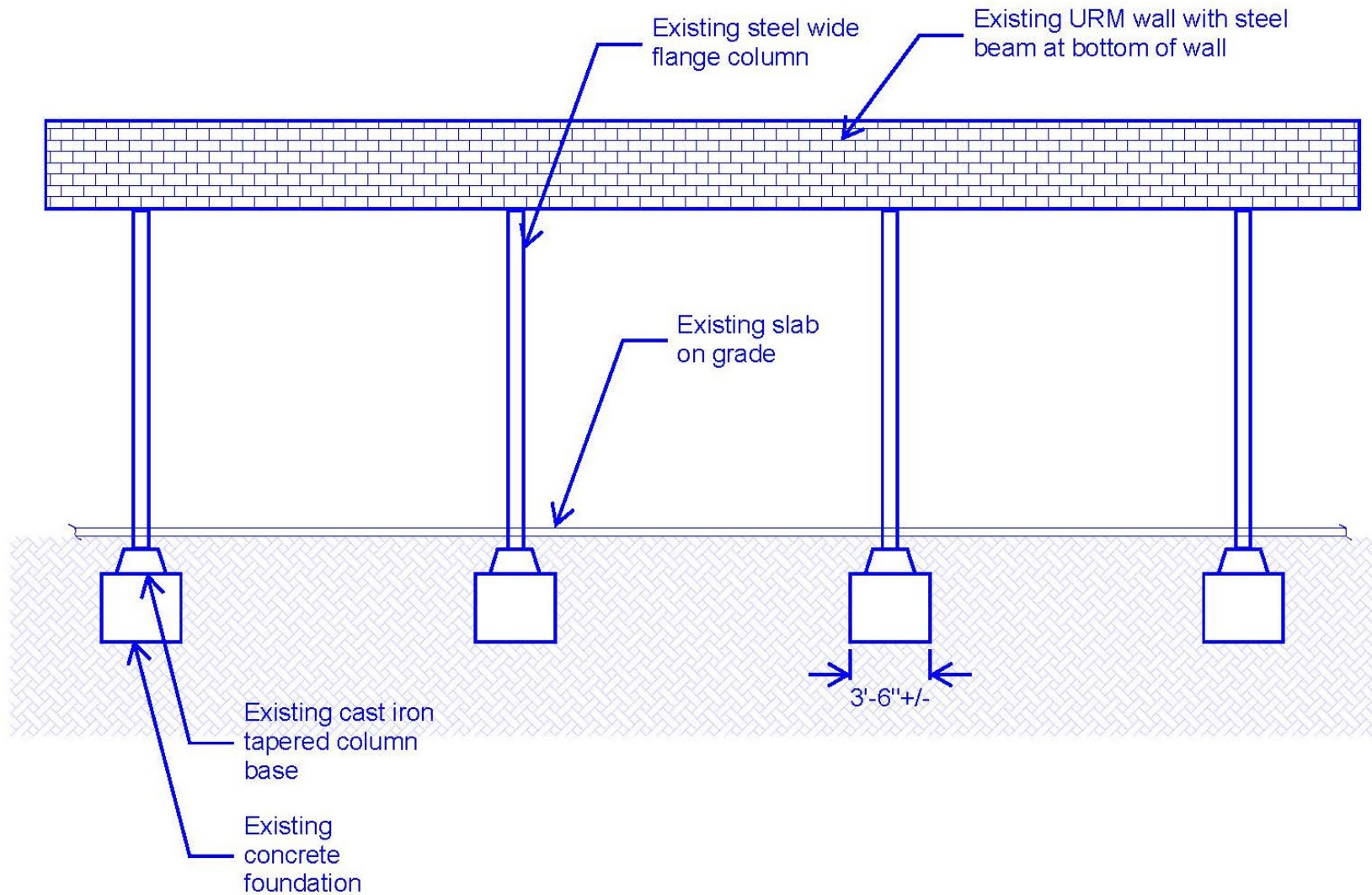




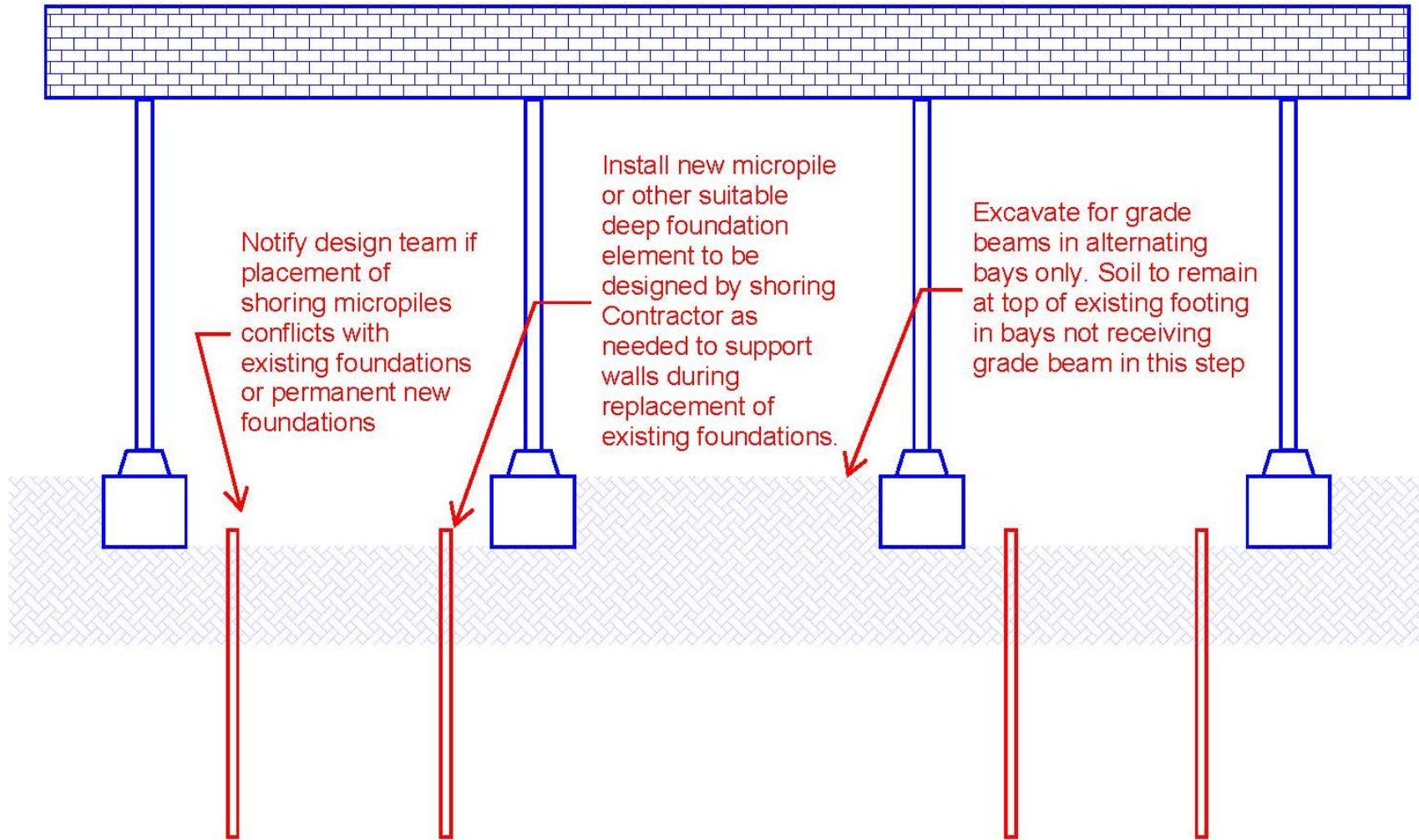




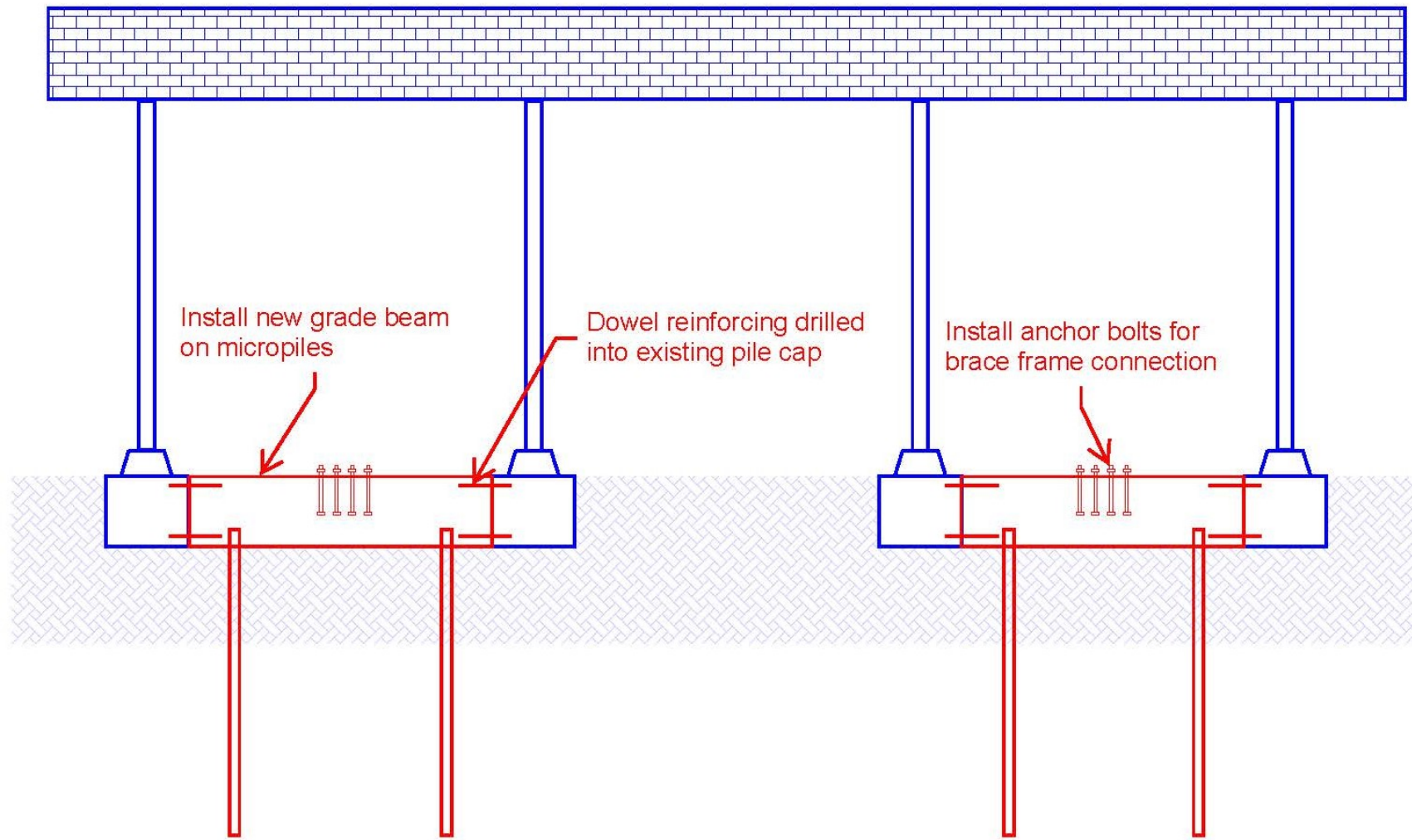
BUEHLER



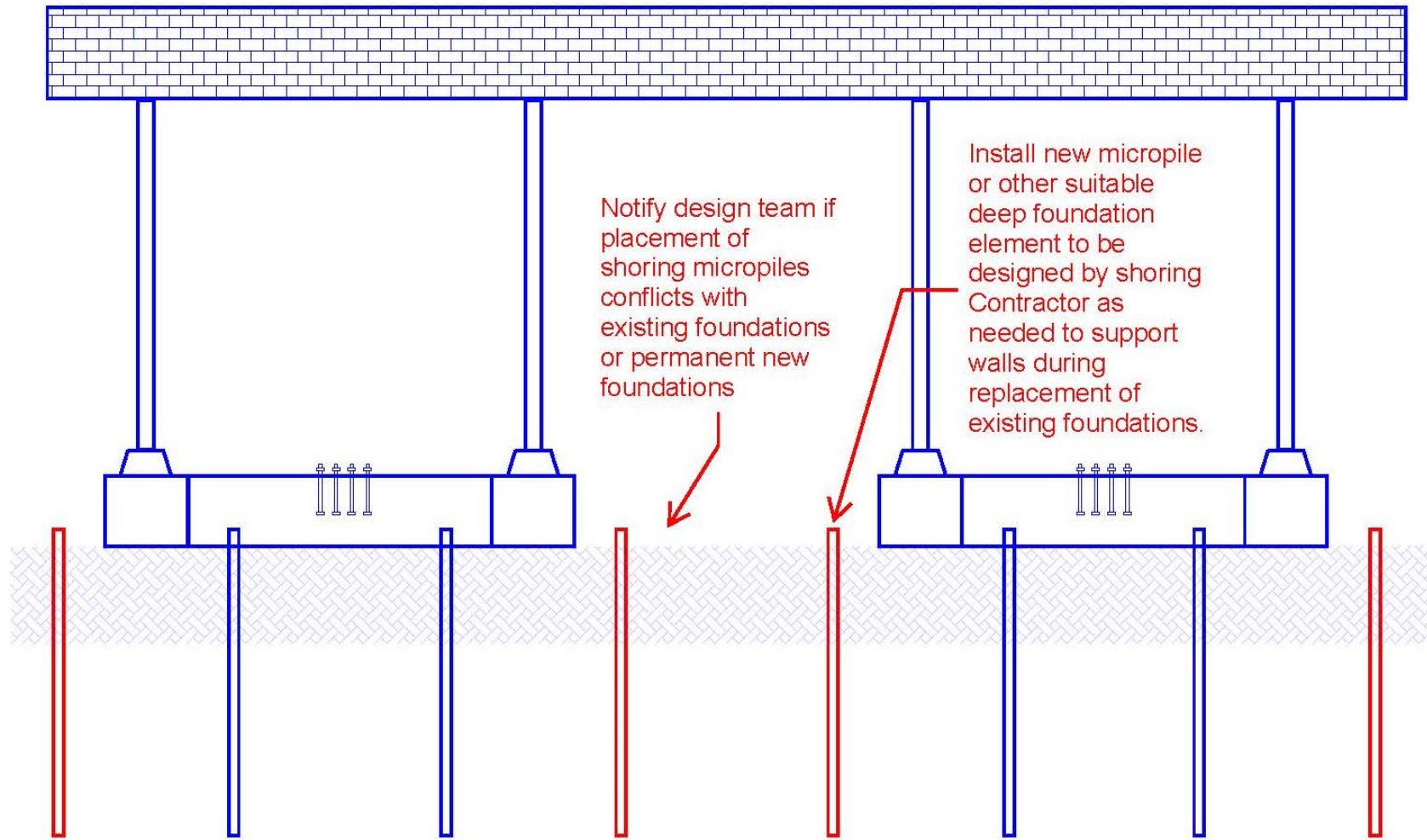
INITIAL STATE: EXISTING STRUCTURE



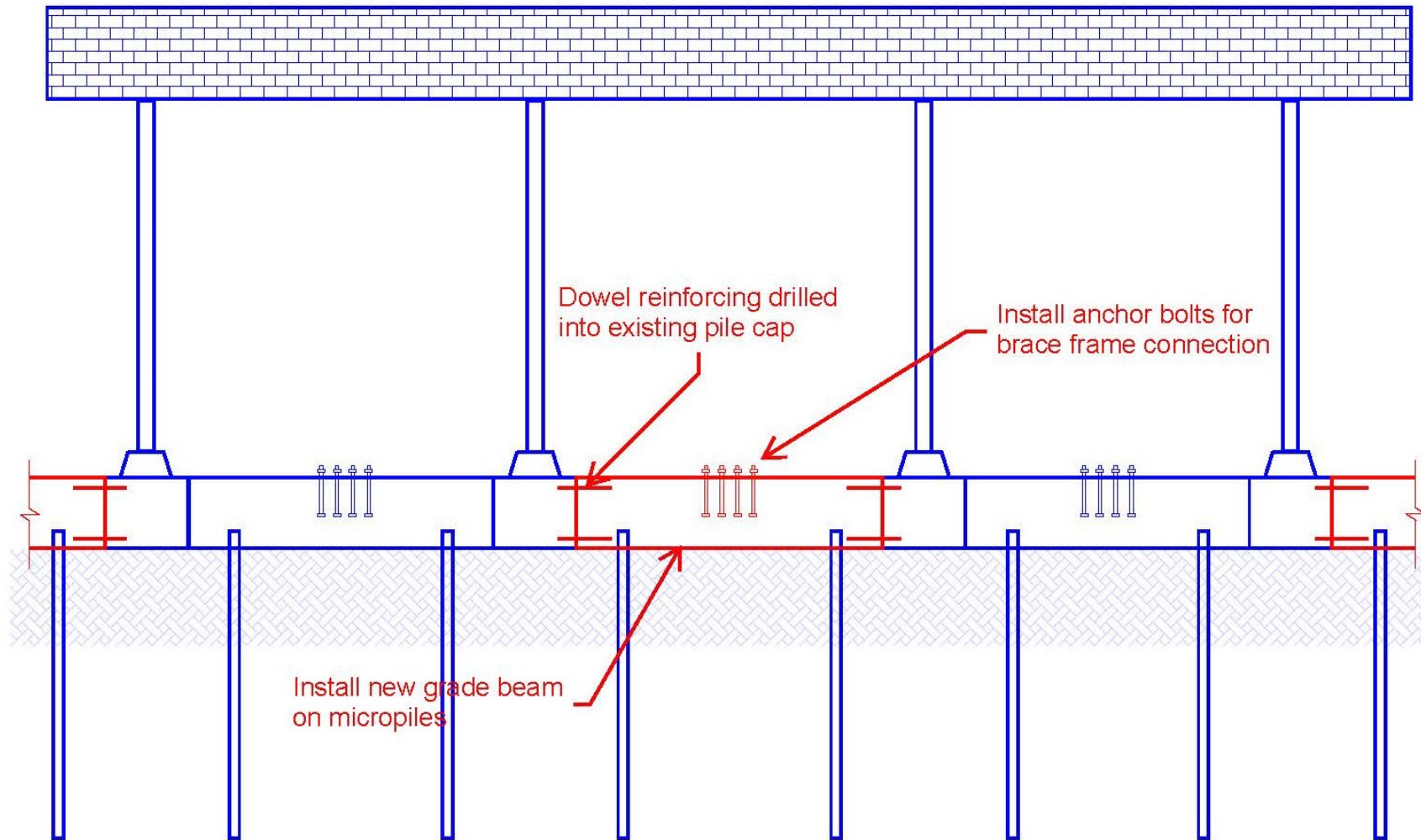
STEP 1A: INSTALL MICROPILES AND GRADE BEAMS IN ALTERNATING BAYS



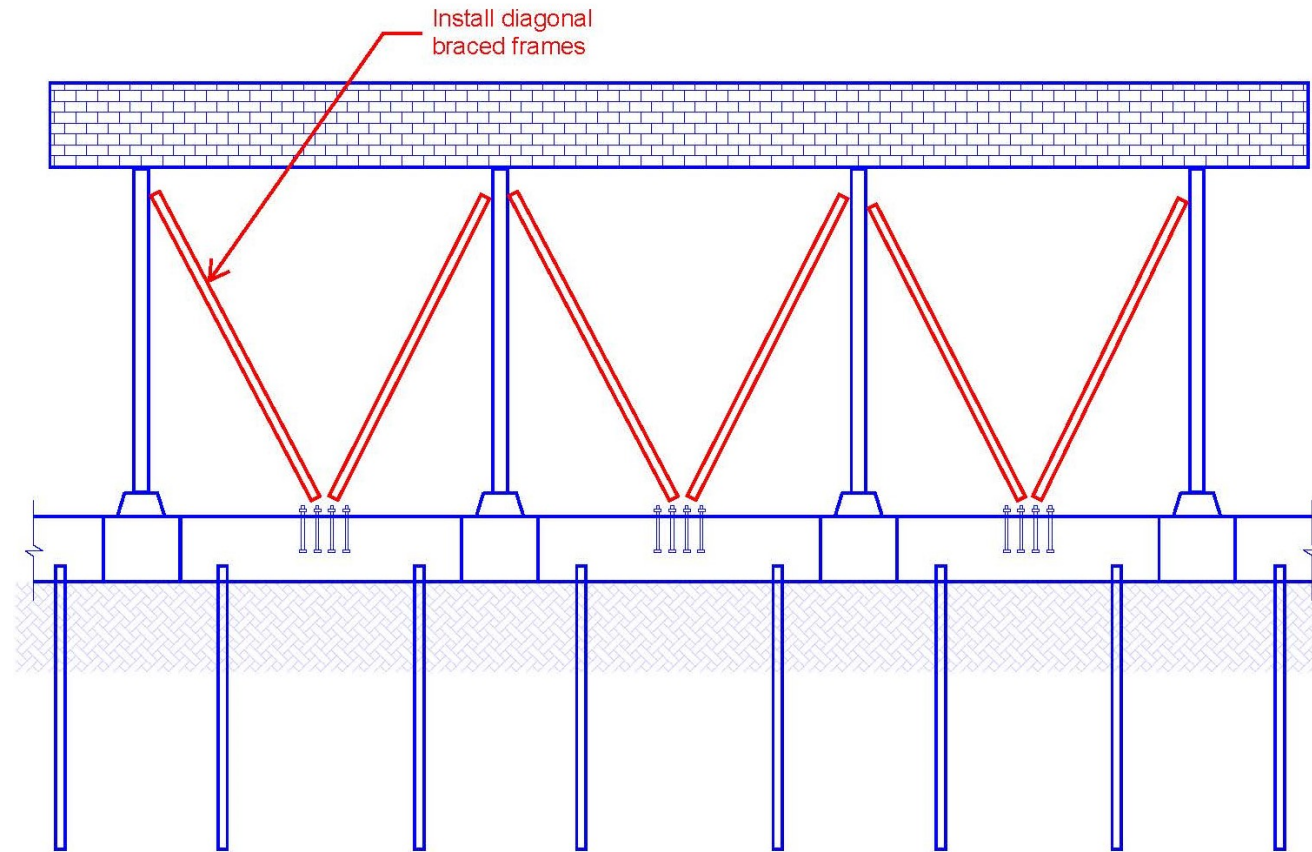
STEP 1B: INSTALL MICROPILES
AND GRADE BEAMS IN
ALTERNATING BAYS



STEP 2A: INSTALL
MICROPILES AND GRADE
BEAM IN REMAINING BAYS



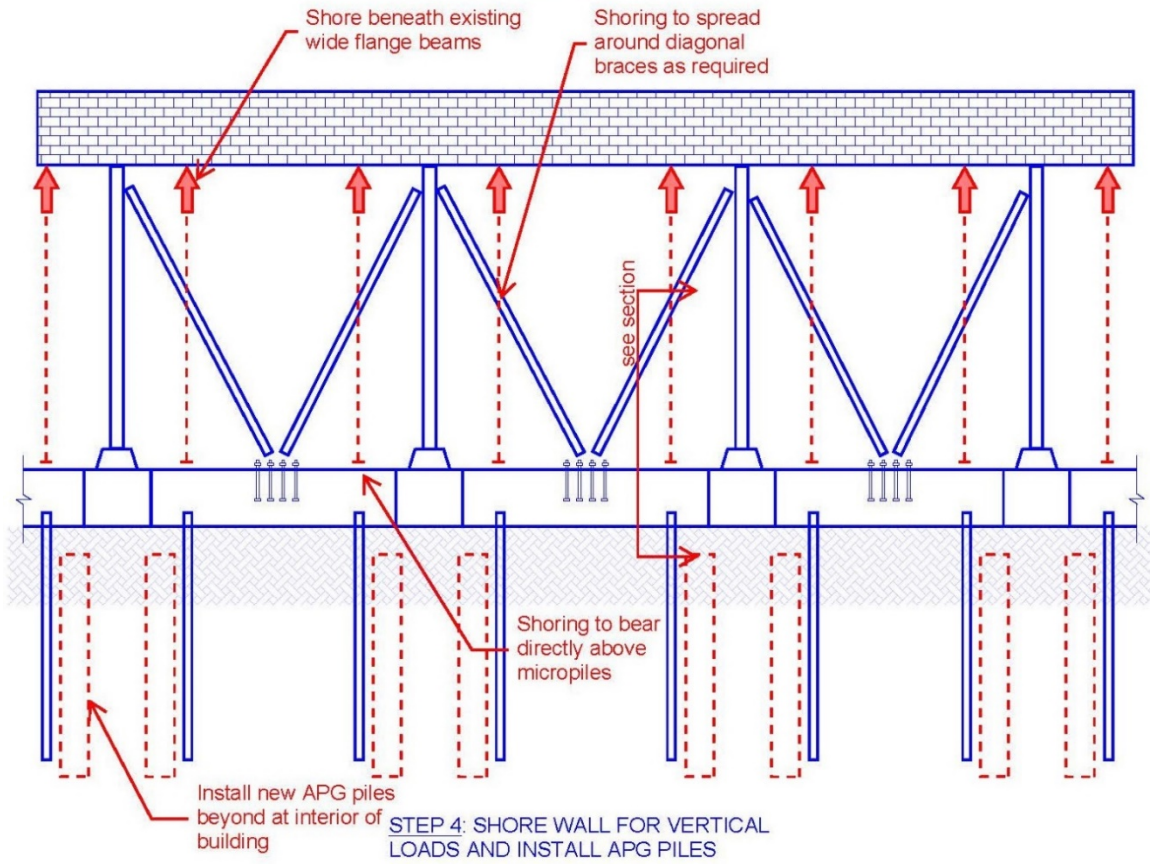
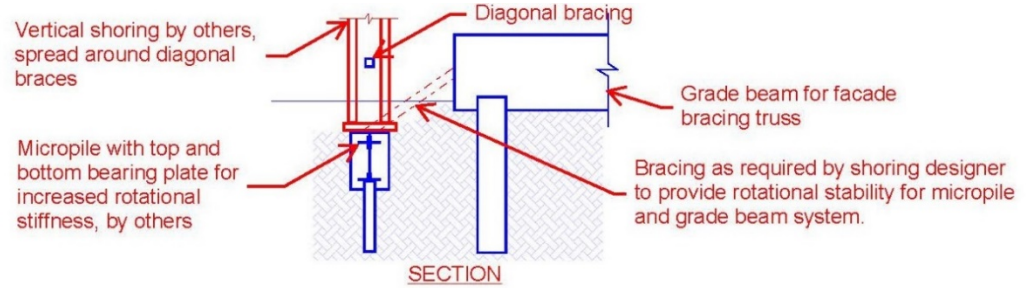
STEP 2B: INSTALL
MICROPILES AND GRADE
BEAM IN REMAINING BAYS



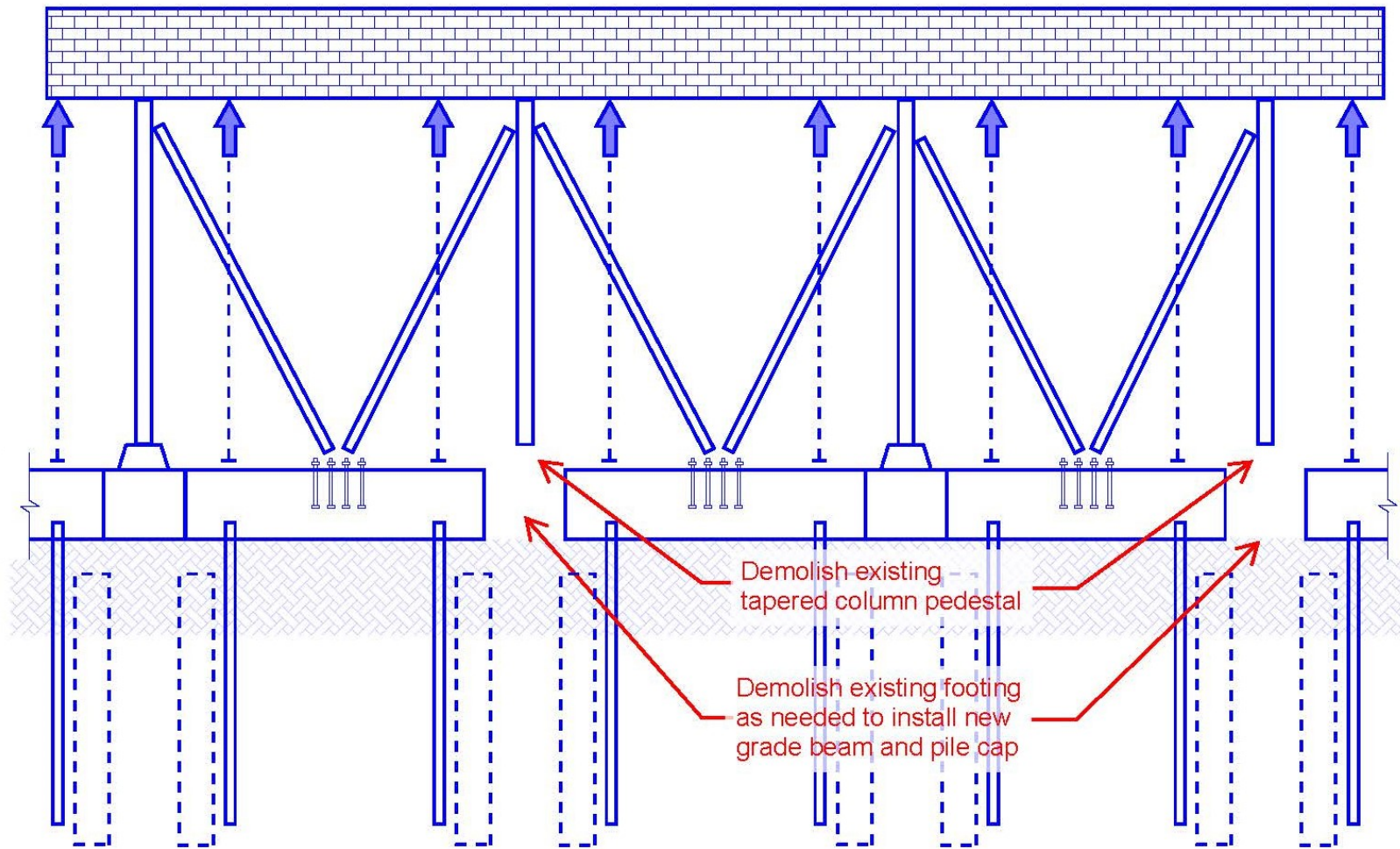
STEP 3: INSTALL DIAGONAL BRACES

This step completes the scope of the Facade Strengthening package

The remainder of the building may be demolished at this point.

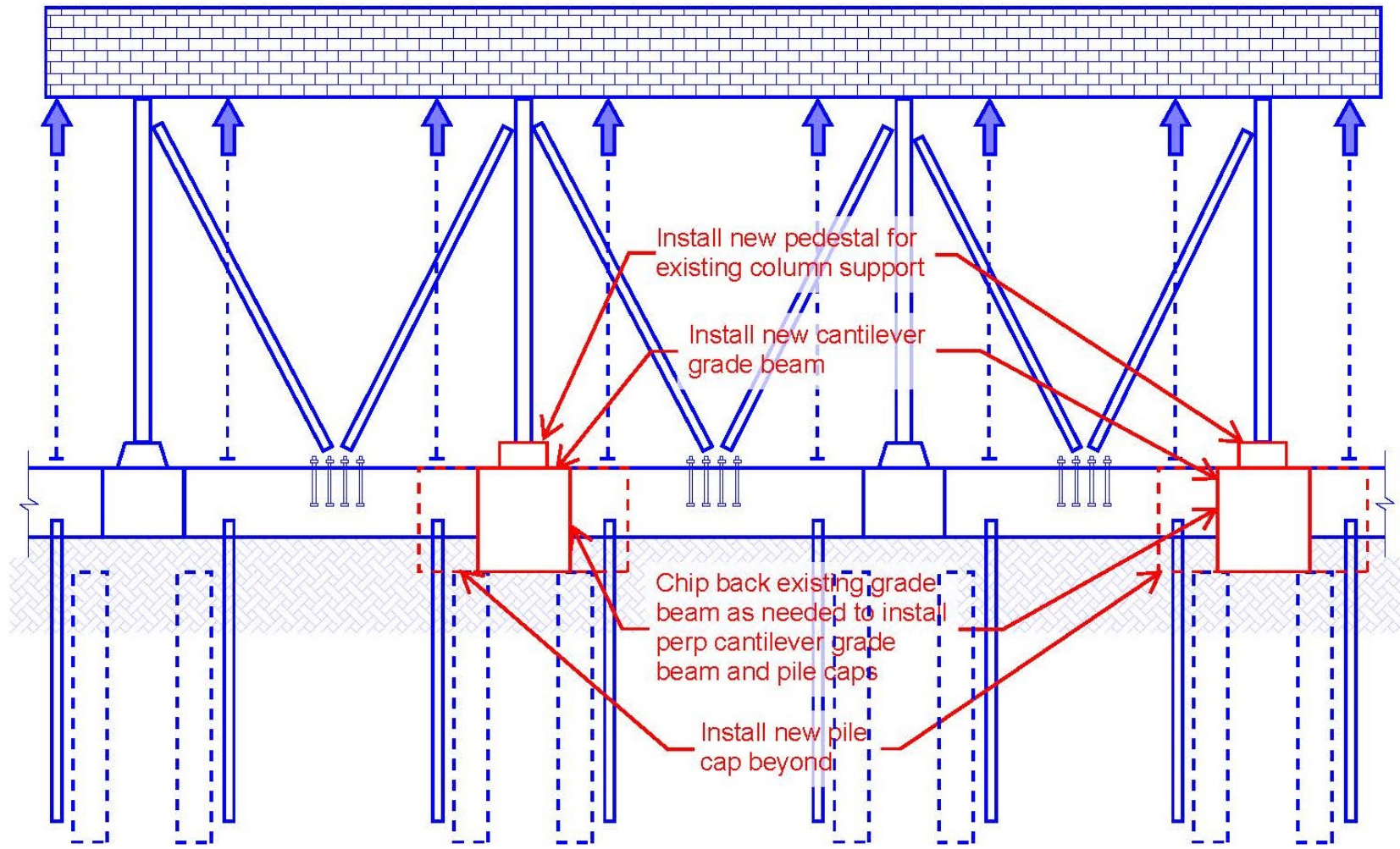


This step begins the full building new construction package



STEP 5A: DEMOLISH FOUNDATIONS
IN ALTERNATING BAYS

In preparation of foundation work at existing wall,
install new pile caps at interior columns and trench
excavations for cantilever grade beams



STEP 5B: INSTALL NEW FOUNDATIONS
IN ALTERNATING BAYS





Google Earth

©2019 Google
©2018 Google

TIME-LAPSE
VIDEO
OF THE
MARSHALL HOTEL DEMOLIITON





News bites video

WORLD DEMOLITION SUMMIT 2019

Rodd Palon

President, Two Rivers Demolition
Demolition with Façade Retention

